



EXAMINATIONS COUNCIL OF ESWATINI
Junior Certificate Examination

AGRICULTURE

516/01

Paper 1

October/November 2021

1 hour

READ THESE INSTRUCTIONS FIRST

The answer sheet provided has your Name, Centre Number and Candidate Number and it must be signed after completion of the paper.

This paper consists of **40** multiple choice questions. **Four** possible answers are given for each question. Choose the **best** answer and shade your choice in the box provided under the correct letter in soft pencil **HB** on the separate Answer Sheet provided.

You may use a calculator

Read all questions carefully.

Answer **all** questions.

EXAMPLE: 41 How many days does a beetroot take from planting to harvesting?

- A. 10 - 30 days
- B. 30 - 60 days
- C. 60 - 90 days
- D. 90 - 120 days

41	A <input type="radio"/>	B <input type="radio"/>	C <input checked="" type="radio"/>	D <input type="radio"/>
----	----------------------------	----------------------------	---------------------------------------	----------------------------

For Examiner's Use

Marks

SECTION: A

1. What is subsistence farming?
 - A producing animals in a small scale to get cash
 - B producing crops and animals for oneself and sell surplus
 - C producing crops and animals in a large scale for sale
 - D producing crops on small scale to get cash

2. What is the importance of crop rotation?
 - A controls pests and diseases
 - B improves soil textural class
 - C reduces the pH of the soil
 - D reduces the use of nutrient

3. Which is the best tool for removing tree stumps?
 - A fork
 - B hacksaw
 - C pickaxe
 - D spade

4. Which term describes the removal of weak vegetable seedlings from a seedbed?
 - A thinning
 - B transplanting
 - C uprooting
 - D weeding

5. Which career opportunity in agriculture involves the identification and control of livestock diseases?
 - A agronomist
 - B entomologist
 - C horticulturalist
 - D veterinarian

6. Which policy prevents the spread of livestock diseases?
 - A crop import act
 - B environmental act
 - C national strategy
 - D stock movement act

7. Which plant process involves the use of chlorophyll?
- A germination
 - B photosynthesis
 - C respiration
 - D transpiration
8. Which substances are required for the respiration process to occur?
- A carbohydrates and oxygen
 - B carbohydrates and water
 - C carbon dioxide and oxygen
 - D carbon dioxide and water
9. Why are inorganic fertilizers needed in smaller amounts?
- A have concentrated nutrients
 - B have different plant nutrients
 - C they are very expensive
 - D they dissolve very slowly
10. Which plant nutrient helps plants to develop roots early?
- A nitrogen
 - B phosphorus
 - C potassium
 - D sulphur
11. Why is manure added when making a compost?
- A provides food for microorganisms
 - B provides the right microorganisms
 - C provides the required plant nutrients
 - D speeds up the decomposition process
12. Which term describes the different sizes of particles in a soil?
- A soil pH
 - B soil profile
 - C soil structure
 - D soil texture
13. Which land class is important in water conservation?
- A III
 - B IV
 - C V
 - D VI

14. Which term describes the contamination of the environment?
- A biodiversity
 - B desertification
 - C ecosystem
 - D pollution
15. Which characteristic describes invasive plants?
- A conserves moisture in the soil
 - B good for livestock grazing
 - C grows and spread rapidly
 - D prevents erosion in pastures
16. Which planting method is suitable for planting sweet potatoes?
- A broadcasting
 - B furrow
 - C intercropping
 - D interval
17. What is the importance of hardening - off seedlings?
- A to promote plant growth
 - B to make plants tolerant
 - C to prevent plant diseases
 - D to prevent soil erosion
18. Which traditional method of storing grain keeps it cool?
- A clay pots
 - B grass baskets
 - C mud tanks
 - D underground pits
19. Which factor should be considered in a poultry house site selection to avoid flooding?
- A roads
 - B setbacks
 - C topography
 - D utilities
20. Which equipment increases day length?
- A brooder
 - B heater
 - C incubator
 - D lights

21. What is the advantage of keeping chickens in intensive system?
- A they eat a variety of food
 - B little daily care is needed
 - C egg production is high
 - D they produce tastier eggs
22. What is the dressing- out percentage of a chicken with a live mass of 2.5 kg and a carcass mass of 1.8 kg?
- A 18 %
 - B 25 %
 - C 43 %
 - D 72 %
23. Which bee caste die after mating?
- A co-workers
 - B drones
 - C queens
 - D workers
24. What is the name of honey covered with a thin layer of wax?
- A capped honey
 - B comb honey
 - C packed honey
 - D unripe honey
25. Which activity describes the demaree method of catching a swarm?
- A clipping one wing of the queen bee
 - B rearrange frames above brood nest
 - C remove capped brood with old queen
 - D remove some frames in brood chamber
26. Which cattle breed is broad headed with a dark red coat?
- A Afrikander
 - B Brahman
 - C Friesian
 - D Nguni
27. What is the use of an elastrator?
- A castrating
 - B dehorning
 - C deworming
 - D identification

28. Which cattle supplementary feed contains a mixture of nutrients in a hard block?
- A concentrates
 - B foggage
 - C hay
 - D mineral licks
29. Which cattle management practice controls tick – borne diseases?
- A blood smear
 - B cordon line
 - C dipping
 - D quarantines
30. Which farming practice reclaims the land?
- A control burning of grass
 - B ploughing across the slope
 - C practicing crop rotation
 - D replacing the top soil
31. How much pellets should be given to a doe after mating?
- A 100g
 - B 120g
 - C 140g
 - D 225g
32. When do rabbits excrete the soft whitish pellets?
- A during noontday
 - B during the night
 - C in the afternoon
 - D in the morning
33. When should test mating be done in rabbit production?
- A 12 days after first mating
 - B 14 days after first mating
 - C 18 days after first mating
 - D 28 days after first mating

34. Fig. 34.1 shows a goat breed.

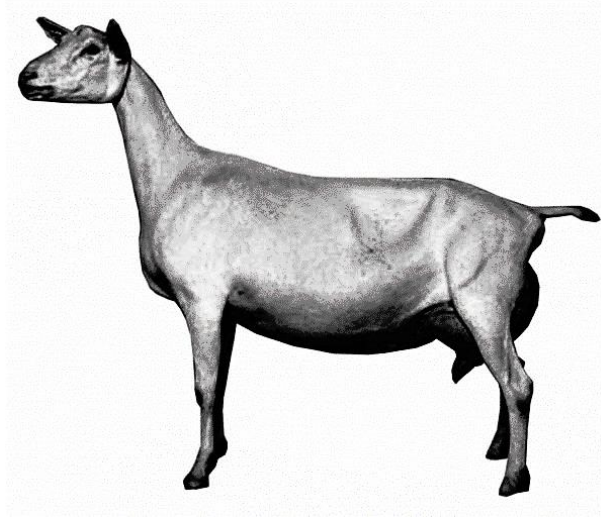


Fig. 34.1

Which breed of goats is shown in Fig. 34.1?

- A Angora
- B Boer
- C Saanen
- D Toggenburg

35. Which management practice prevents mastitis in goats?

- A clean and disinfect the pan
- B keep goats in dry conditions
- C regular deworming the goats
- D regular dipping the goats

36. Which part of the digestive system of a goat absorbs water?

- A abomasum
- B colon
- C reticulum
- D rumen

37. Which is the critical time for water supply in fruit trees production?

- A during flowering
- B during harvesting
- C during root growth
- D during stem growth

- 38.** What is the importance of a tree sealer in fruit crop production?
- A** prevent disease entry
 - B** promote root growth
 - C** promote shoot growth
 - D** supply plant nutrients
- 39.** Which marketing operation convinces consumers of agricultural products that they want the product offered?
- A** advertising
 - B** assembling
 - C** grading
 - D** selling
- 40.** Which component of the marketing mix improves the sales of agricultural products even during off – season period?
- A** place
 - B** price
 - C** product
 - D** promotion

Permission to reproduce items where third-party owned material protected by copyright is included has been sought and cleared where possible. Every reasonable effort has been made by the publisher (ECESWA) to trace copyright holders, but if any items requiring clearance have unwittingly been included, the publisher will be pleased to make amends at the earliest possible opportunity.